

DHS Series — Direct Drive



DH-2003-SE0E2G

Known for efficiency and longevity, these hot water electric pressure washers are built for heavy-duty cleaning on industrial and commercial worksites. They feature a top-fired heat exchanger that is completely accessible.

Pump:

Direct drive triplex piston General or Mi-T-M pump with ceramic plungers | Stainless-steel and brass unloader | Equipped with the Mi-T-M Pressure Relief Start (Mi-T-M pump models) | Forged brass manifold | Thermal relief valve | High pressure detergent injector (Available as an option on Mi-T-M pump models)

Motor:

Totally enclosed fan-cooled electric motor with manual thermal overload protection | 35-foot power cord

Frame:

Reinforced powder coated steel tube frame with center balanced lift | 13-inch flat-free tires

Components:

Energy-efficient top-fired heat exchanger | No. 1 or No. 2 diesel or kerosene fired burner (Not approved for bio-fuel)

Miscellaneous:

Temperature rise 150°F/66°C above ambient, maximum outlet temperature is 200°F

Unit Includes:

Quick connect nozzles - 0°, 15°, 25° and 40° | 50-foot x 3/8-inch steel wire-braided high pressure hose | Adjustable pressure insulated dual lance | Professional-grade insulated trigger gun with safety lock-off



Portable Electric

Hot Water – DHS Series – Direct Drive

MODEL NUMBER	PSI	GPM	HORSEPOWER/MOTOR	PUMP	PLUG TYPE	BURNER FUEL TANK CAPACITY	BURNER FUEL CONSUMPTION	BTU per hour	DIMENSIONS (LxWxH)	SHIP WT.	NET WT.
DH-1002-SE0E1G	1000	2.0	1.5 HP, 120V, 1Ø, 15.0A	General	NEMA 5-15P	4.0 gallons	1.33 gph	186,000	43x29.5x36.5in.	418 lb.	295 lb.
DH-1002-SE0E1M*	1000	2.0	1.5 HP, 120V, 1Ø, 15.0A	Mi-T-M	NEMA 5-15P	4.0 gallons	1.33 gph	186,000	43x29.5x36.5in.	410 lb.	237 lb.
DH-1502-SE0E1G	1500	2.0	2.0 HP, 120V, 1Ø, 19.0A	General	NEMA 5-20P	4.0 gallons	1.21 gph	169,000	43x29.5x36.5in.	422 lb.	299 lb.
DH-1502-SE0E1M*	1500	2.0	2.0 HP, 120V, 1Ø, 19.0A	Mi-T-M	NEMA 5-20P	4.0 gallons	1.21 gph	169,000	43x29.5x36.5in.	414 lb.	291 lb.
DH-2003-SE0E2G	2000	2.8	4.0 HP, 230V, 1Ø, 18.0A	General	NEMA 6-20P	4.0 gallons	1.48 gph	207,200	43x29.5x36.5in.	439 lb.	316 lb.
DH-2003-SE0E2M*	2000	2.8	4.0 HP, 230V, 1Ø, 18.0A	Mi-T-M	NEMA 6-20P	4.0 gallons	1.48 gph	207,200	43x29.5x36.5in.	431 lb.	308 lb.

*Model does not include float tank and high pressure detergent injector.

Options:

PART NUMBER	DESCRIPTION	FITS MODELS
HX-0232	300°F steam - Reduces pressure to 350-PSI by adjusting unloader valve counter-clockwise, spray temperatures will rise 240°F above ambient with a maximum of 300°F	DH-1002-SE0E1G
HX-0233	Adjustable thermostat - Operator is able to adjust outlet water temperature between 86°-248°F	All models
HX-0235	Hour meter - Displays number of hours unit has been in operation	All models
HX-0237	Auto start/stop - When trigger gun is released, the timer will turn unit off; when trigger gun is pulled, unit will restart	DH-1002-SE0E1M
HX-0238	Time delay shutdown - Timer will shut unit off automatically when trigger gun is released and timer reaches setting	DH-1002-SE0E1M
HX-0239	300°F steam - Reduces pressure to 350-PSI by adjusting unloader valve counter-clockwise, spray temperatures will rise 240°F above ambient with a maximum of 300°F	DH-1002-SE0E1M
HX-0240	300°F steam - Reduces pressure to 350-PSI by adjusting unloader valve counter-clockwise, spray temperatures will rise 240°F above ambient with a maximum of 300°F	DH-2003-SE0E2G
HX-0241	300°F steam - Reduces pressure to 350-PSI by adjusting unloader valve counter-clockwise, spray temperatures will rise 240°F above ambient with a maximum of 300°F	DH-2003-SE0E2M
HX-0243	Auto start/stop - When trigger gun is released, the timer will turn unit off; when trigger gun is pulled, unit will restart	2000-PSI models
HX-0244	Time delay shutdown - Timer will shut unit off automatically when trigger gun is released and timer reaches setting	2000-PSI models
HX-0245	300°F steam - Reduces pressure to 350-PSI by adjusting unloader valve counter-clockwise, spray temperatures will rise 240°F above ambient with a maximum of 300°F	DH-1502-SE0E1M
HX-0246	300°F steam - Reduces pressure to 350-PSI by adjusting unloader valve counter-clockwise, spray temperatures will rise 240°F above ambient with a maximum of 300°F	DH-1502-SE0E1G
HX-0275	Auto start/stop - When trigger gun is released, the timer will turn unit off; when trigger gun is pulled, unit will restart	DH-1502-SE0E1M
HX-0276	Time delay shutdown - Timer will shut unit off automatically when trigger gun is released and timer reaches setting	DH-1502-SE0E1M

Accessories:

PART NUMBER	DESCRIPTION	FITS MODELS
50-0161	High pressure detergent injector - High pressure water mixes with detergent to clean even the heaviest build-up	All models
850-0433	50-ft. x 3/8-inch high pressure hose - For when you need extra hose for added mobility	All models



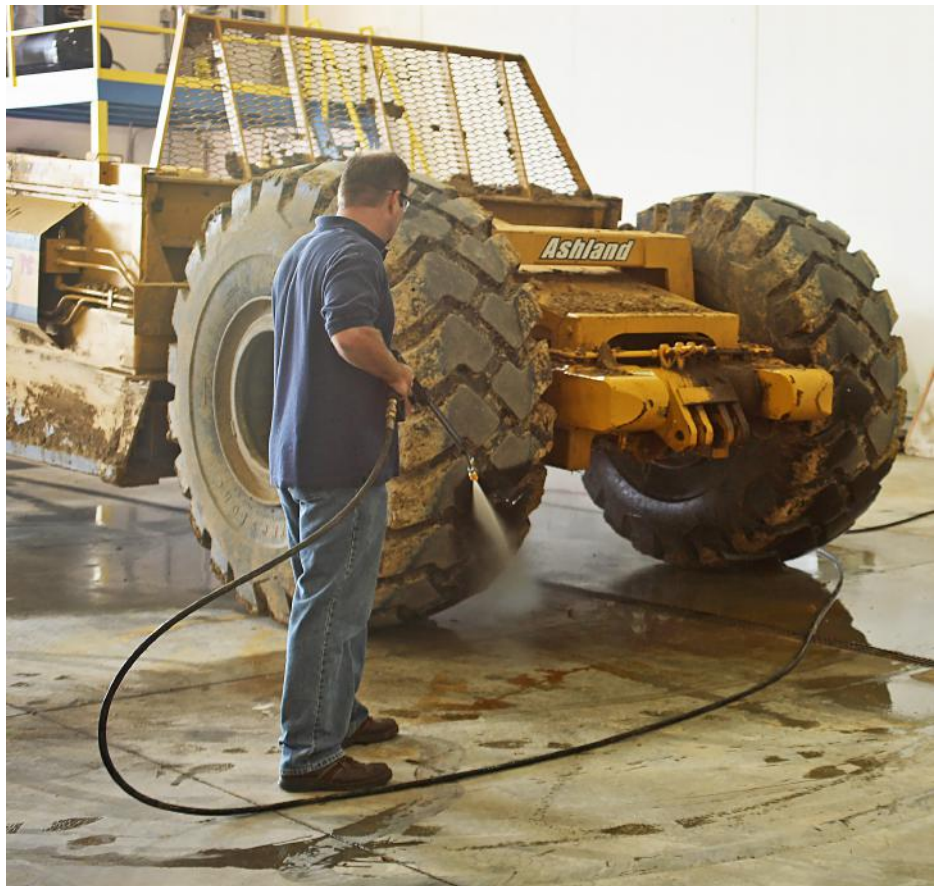
NEMA 5-15P,
15-amp plug



NEMA 5-20P,
20-amp plug



NEMA 6-20P,
20-amp plug



⚠ WARNING: Cancer and Reproductive Harm - www.P65Warnings.ca.gov.