

PARTS LIST FOR
3005 SERIES
PORTABLE/ALUMINUM
ELECTRIC DRIVEN/DIRECT DRIVE
COLD WATER PRESSURE WASHER

Motor Horsepower:	10.0 H.P.
Pump Oil Grade:	Pump Oil #AW-4085-0016
Pump Oil Capacity:	37.2 oz.
Nozzle Size:	5.5

This Parts Listing has been compiled for your benefit. You can be assured your new Cold Water Pressure Washer was constructed and designed with quality and performance in mind using over 25 years experience in the pressure washer business. Each component has been rigorously tested to insure the highest level of acceptance.

The contents of this Parts Listing are based on the latest product information available at the time of publication. The manufacturer reserves the right to make changes in price, color, materials, equipment, specifications or models at any time without notice.

WARNING

THIS IS A PROFESSIONAL HIGH PRESSURE, COLD WATER PRESSURE WASHER. CAUTION SHOULD BE OBSERVED WHEN USING OR REPAIRING THIS UNIT! READ AND FOLLOW THE SAFETY WARNINGS LISTED BELOW BEFORE ATTEMPTING ANY REPAIRS ON THIS PRESSURE WASHER!

SAFETY WARNINGS

1. NEVER alter or modify the equipment. Be sure any accessory items and system components being used will withstand the pressure developed. Use only genuine manufactured parts for repair of your pressure washer. Failure to do so can cause hazardous operating conditions and will VOID warranty.
2. NEVER make adjustments on machinery while the unit is connected to the engine without first removing the ignition cable from the spark plug. Turning over the machinery by hand during adjustment or cleaning might start the engine and machinery with it, causing serious injury to the operator.
3. Know how to stop and bleed pressures quickly. Be thoroughly familiar with controls.
4. Before servicing the unit, turn unit off, relieve the water pressure and allow the unit to cool down. Do not make repairs while the unit is running. Service in a clean, dry, flat area. Block the wheels to prevent the unit from moving. Be especially careful to properly dispose of any flammable materials.
5. After testing the machine, DO NOT leave the pressurized unit unattended. Shut off the unit and release trapped pressure before leaving.

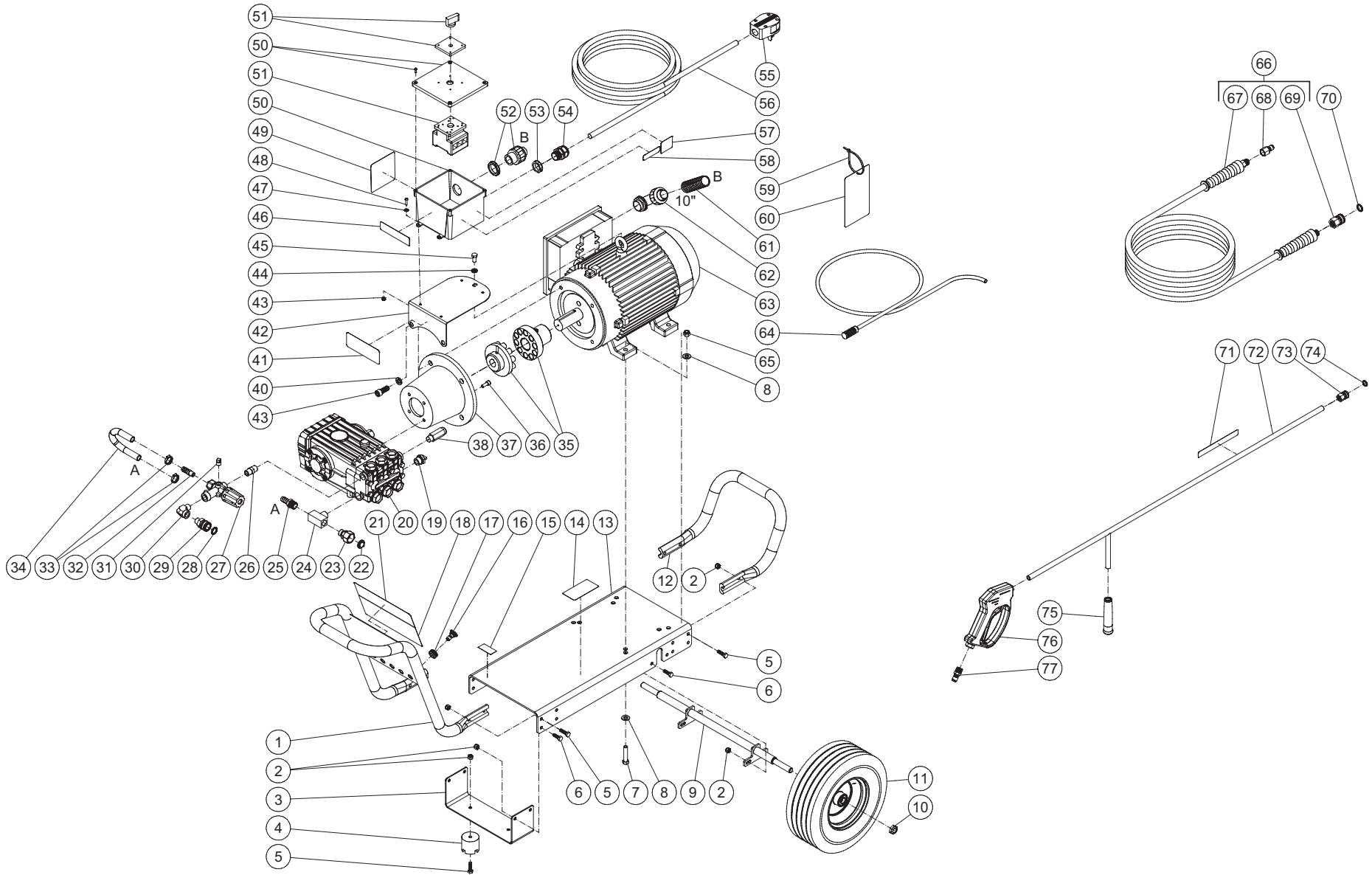
Table of Contents

SPECIFICATIONS.....	3
FRAME ASSEMBLY	4
PUMP ASSEMBLY (3-0438)	6
UNLOADER ASSEMBLY (8-0361)	8
WIRING SCHEMATIC	10
WIRING DIAGRAM	11

SPECIFICATIONS

MODEL	3005
Operating Pressure (PSI/Bar):	3000/206.8
High Pressure Nozzle:	5.5
Water Volume (GPM/lpm):	4.7/17.8
Motor:	Totally enclosed fan cooled, circuit breaker thermal overload protection, 35ft. power supply cord without Ground Fault Circuit Interrupter (GFCI)
Horsepower	10.0
Voltage	230
Phase	Single
Amps	40.5
Pump:	Direct Driven, Oil Bath, Triplex Piston
Oil Type	Pump Oil #AW-4085-0016
Oil Capacity (oz./liters)	37.2 / 1.10
Plungers	Ceramic
Manifold	Forged Brass
Valves	Stainless Steel
Unloader	Adjustable
Thermal Relief Valve	Relieves heated water during unloader bypass stage
Detergent Injector	Adjustable low pressure down stream from pump
Unit Net Weight (lbs/Kg)	285 / 129.3
Unit Shipping Weight (lbs/Kg)	335 / 152.0
Unit Net Dimension (in/cm)	51L X 26W X 24H/129.5L X 66W X 61H
Unit Shipping Dimension (in/cm)	49L X 30W X 36H/124.5L X 76.2W X 91.4H

FRAME ASSEMBLY

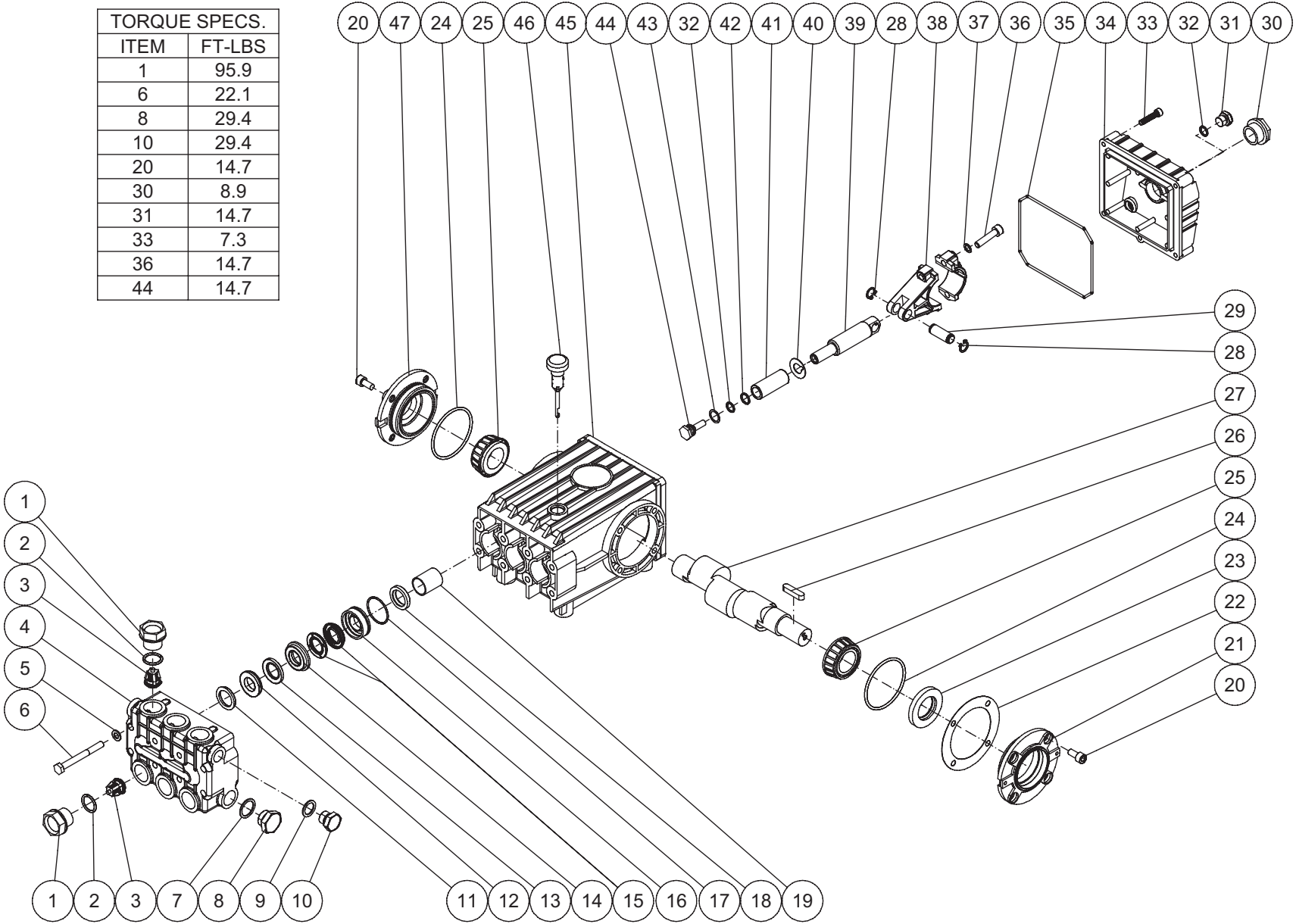


FRAME ASSEMBLY				FRAME ASSEMBLY			
ITEM	DESCRIPTION	PART #	QTY	ITEM	DESCRIPTION	PART #	QTY
1	FRONT HANDLE	7-0265	1	39	BOLT	27-0879	4
2	LOCKNUT	30-0157	18	40	LOCKWASHER	29-0010	4
3	UNDERBRACKET	56-0085	1	41	DECAL - WARNING RISK OF INJECTION/EXPLOSION (SEE 71-1064)	N/A	1
4	ISOLATOR	14-0008	2	42	BRACKET	13-0246	1
5	BOLT	27-0068	10	43	NUT	30-0154	4
6	BOLT	27-0067	8	44	LOCKWASHER	29-0008	1
7	BOLT	27-0170	4	45	BOLT	27-0116	1
8	WASHER	28-0005	8	46	DECAL-3000 PSI (SEE 71-1064)	34-2899	1
9	AXLE	5-0379A53	1	47	WASHER	28-0001	4
10	LOCKNUT	30-0117	2	48	SCREW	27-2811	4
11	WHEEL	14-0150	2	49	DECAL - CAUTION/IMPORTANT (E/S)	N/A	1
12	HANDLE	7-0266	1	50	ELECTRICAL BOX	32-1225	1
13	BASEPLATE	5-0378	1	51	SWITCH	32-0301	1
14	DECAL- SILVER STICKER	N/A	1	52	STRAIGHT CONDUIT FITTING	32-0996	1
15	DECAL - MADE IN USA	34-3553	1	53	ELECTRICAL LOCKNUT	32-0292	1
16	NOZZLE	18-0410	1	54	CORD RELIEF	9-0046	1
-	NOZZLE	18-0411	1	55	PLUG	32-0012	1
-	NOZZLE	18-0412	1	56	CORD *(THIRTY FIVE FEET REQUIRED)	32-0021	1
-	NOZZLE	18-0413	1	57	DECAL-CONNECT CIRCUIT BR. (SEE 71-1064)	N/A	1
17	GROMMET	33-0001	5	58	DECAL - WARNING POTABLE WATER (E/S)	N/A	1
18	DECAL-WARN RISK OF ELECTRO E/S	N/A	1	59	CABLE TIE	33-0022	1
19	RELIEF VALVE	22-0005	1	60	TAG - WARNING RISK OF ELECTROCUTION	34-1035	1
20	PUMP	3-0438	1	61	CONDUIT FLEX *(ONE FOOT REQUIRED)	32-0908	1
21	DECAL - PLACARD	N/A	1	62	CONDUIT ELBOW	32-0907	1
22	FILTER	19-0001	1	63	MOTOR	2-0202	1
23	GARDEN HOSE ASSY.	23-0095	1	64	DETERGENT HOSE	19-0233	1
24	TEE	23-0235	1	65	LOCKNUT	30-0161	4
25	BARB	23-0045	1	66	HOSE ASSEMBLY	851-0338	1
26	NIPPLE	24-0010	1	67	HOSE	15-0209	1
27	UNLOADER	8-0361	1	68	QUICK CONNECT	17-0006	1
28	O-RING	25-0123	1	69	QC SOCKET	17-0004	1
29	QUICK CONNECT SOCKET	17-0007	1	70	O-RING	25-0123	1
30	ELBOW	24-0105	1	71	DECAL - RISK OF INJECTION (SEE 71-1064)	N/A	1
31	PLUG	23-0238	1	72	WAND	16-0342A01	1
32	HOSE BARB	23-0120	1	73	QUICK CONNECT	17-0036	1
33	HOSE CLAMP	42-0011	2	74	O-RING	25-0122	1
34	HOSE *(TWO FEET REQUIRED)	15-0007	1	75	GRIP	7-0002	1
35	COUPLER	38-0073	1	76	GUN	16-0483	1
36	SCREW	27-8432	4	77	QUICK CONNECT	17-0005	1
37	FLANGE	38-0072	1	-	DECAL SET	71-1064	1
38	SAFETY VALVE	22-0376	1				

*MUST ORDER IN ONE FOOT LENGTHS

PUMP ASSEMBLY (3-0438)

TORQUE SPECS.	
ITEM	FT-LBS
1	95.9
6	22.1
8	29.4
10	29.4
20	14.7
30	8.9
31	14.7
33	7.3
36	14.7
44	14.7



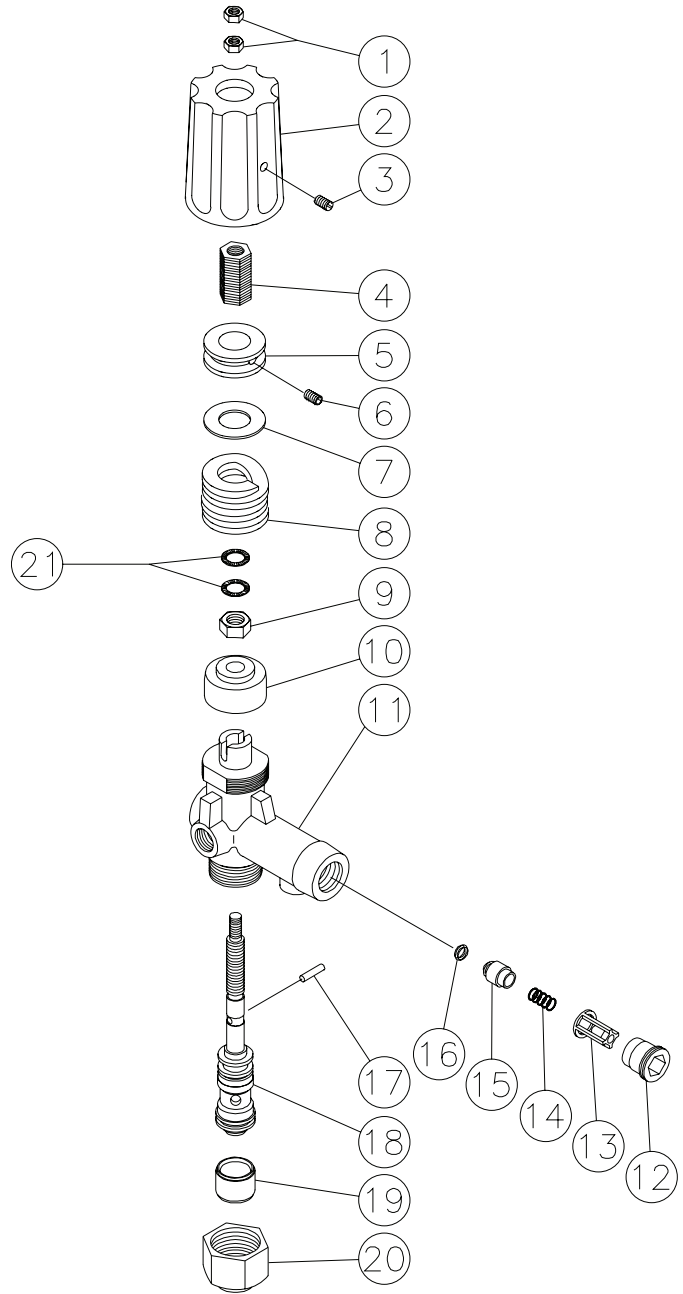
3-0438 111017 ACR

PUMP ASSEMBLY

ITEM	DESCRIPTION	PART #	QTY	ITEM	DESCRIPTION	PART #	QTY
1	VALVE PLUG	39-0021	6	25	BEARING	48-0012	2
2	O-RING	25-0012	6	26	KEY	43-0048	1
3	VALVE (SEE KIT 70-0009)	22-0056	6	27	CRANKSHAFT	46-1723	1
4	MANIFOLD	46-0061	1	28	RETAINING RING	46-0103	6
5	WASHER	28-1039	8	29	CONNECTING ROD PIN	43-0032	3
6	BOLT	27-8185	8	30	OIL LEVEL INDICATOR	46-0114	1
7	WASHER	28-1038	1	31	PLUG	39-0017	1
8	PLUG	39-0019	1	32	O-RING	25-0014	4
9	WASHER	28-1002	1	33	BOLT	27-8404	5
10	PLUG	39-0018	1	34	CRANKCASE OPEN COVER	46-0295	1
11	HEAD RING (SEE KIT 70-0030 AND 852-0122)	70-0030	3	35	O-RING	25-0339	1
12	V-PACKING SUPPORT (SEE KIT 70-0147 AND 852-0122)	26-0098	3	36	BOLT	27-8435	6
13	O-RING (SEE KIT 70-0147 AND 70-0148 AND 852-0122)	25-0207	3	37	LOCKWASHER	29-0154	6
14	HIGH PRESSURE INTERMEDIATE SEAL RETAINER (SEE KIT 70-0148)	46-0659	3	38	CONNECTING ROD	46-0051	3
15	PRESSURE SEAL (SEE KIT 70-0147 AND 852-0122)	26-0197	3	39	PISTON ROD	46-0056	3
16	LOW PRESSURE SEAL RETAINER	46-0057	3	40	SLINGER WASHER	46-0146	3
17	O-RING (SEE KIT 852-0122)	25-0015	3	41	PLUNGER	46-0052	3
18	OIL SEAL	26-0047	3	42	BACK-UP RING	46-0109	3
19	BUSHING	9-0029	3	43	WASHER	28-0400	3
20	BOLT	27-8431	8	44	NUT / PISTON	46-0069	3
21	CRANKCASE COVER	46-0296	1	45	CRANKCASE	46-0047	1
22	SHIM	46-0113	1	46	OIL DIP STICK	46-0144	1
23	OIL SEAL	26-0049	1	47	CRANKCASE COVER	46-0336	1
24	O-RING	25-0013	2				

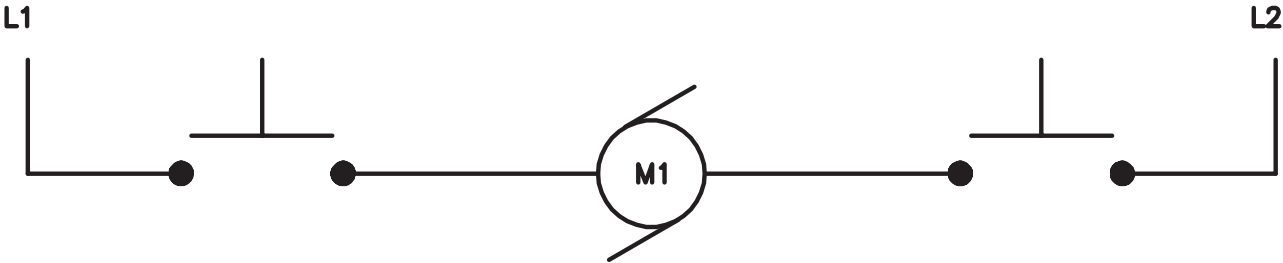
KIT#	DESCRIPTION	ITEMS	# OF ASSEMBLIES	# OF CYLINDERS
70-0009	VALVES	3	6	3
70-0030	HEAD RING	11	3	3
70-0147	V-PACKING	12, 13, 15	3	3
70-0148	INTERMEDIATE RETAINER	13, 14	3	3
852-0122	V-PACKING ASSY	11-13, 15, 17	3	3

UNLOADER ASSEMBLY (8-0361)



UNLOADER (850-0252)			
REF. #	DESCRIPTION	PART #	QTY.
1	Hex Nut	8-0362	2
2	Cover	7-0098	1
3	Set Screw	27-4280	1
4	Adjusting Insert- Brass	8-0363	1
5	Adjustment Nut	8-0364	1
6	Set Screw	8-0365	1
7	Glide Ring	8-0366	1
8	Spring	49-0104	1
9	Hex Nut	8-0367	1
10	Bushing	8-0368	1
11	Unloader Body	8-0369	1
12	Retainer	8-0269	1
13	Valve Housing	8-0104	1
14	Spring	49-0023	1
15	Valve	8-0105	1
16	O-ring	25-0036	1
17	Cylinder Pin	8-0372	1
18	Piston Repair Kit	70-0243	1
19	Spacer	8-0371	1
20	Stop Nut	8-0157	1
21	Washer	29-0154	2
	Check Valve Repair Kit (Includes 13-16)	70-0244	
	Unloader Complete	850-0252	

WIRING SCHEMATIC



WIRING DIAGRAM

