

*HHB Series — Belt Drive*



HHB-2503-0E2A

*Designed for heavy-duty industrial cleaning jobs requiring hot water, the belt-driven HHB Series can easily handle demanding jobs. It is a popular choice on construction jobsites, agricultural locations and for indoor commercial cleaning applications.*

**Pump:**

Belt drive triplex piston AR pump with ceramic plungers | Adjustable high pressure detergent injector

**Motor:**

Open drip-proof electric motor with manual thermal overload protection | 35-foot power cord

**Frame:**

Wrinkle-finish powder coated steel frame assembly | 13-inch flat-free tires with rear tire brake

**Components:**

Stainless-steel coil wrap heat exchanger with horizontal schedule 80 pipe coil | No. 1 or No. 2 fuel oil, diesel or kerosene fired burner (Not approved for bio-fuel) | Racor fuel filter/water separator | Adjustable thermostat | Polyethylene float tank with inlet filter screen | 10-gallon polyethylene fuel tank

**Miscellaneous:**

Temperature rise 150°F/66°C above ambient, maximum outlet temperature is 200°F

**Unit Includes:**

Quick connect nozzles - 0°, 15°, 25° and 40° and low pressure nozzle (except on HHB-303-0E1A) | 50-foot x 3/8-inch high pressure hose (50-foot steam hose on HHB-303-0E1A) | Adjustable pressure insulated dual lance (except on HHB-303-0E1A) | Single lance with dual insulated grips; steam nozzle (HHB-303-0E1A) | Professional-grade insulated trigger gun with safety lock-off



# Portable Electric Hot Water – HHB Series – Belt Drive

MODEL NUMBER	PSI	GPM	HORSEPOWER/MOTOR	PLUG TYPE	BURNER FUEL TANK CAPACITY	BURNER FUEL CONSUMPTION	BTU per hour	DIMENSIONS (LxWxH)	SHIP WT.	NET WT.
HHB-1002-0E1A	1000	2.0	1.5 HP, 115V, 1Ø, 16.2A	NEMA 5-20P	10.0 gallons	1.23 gph	172,200	57x30x41.5in.	606 lb.	486 lb.
HHB-1003-0E1A	1000	2.8	2.0 HP, 115V, 1Ø, 20.0A	NEMA 5-20P	10.0 gallons	1.84 gph	257,600	57x30x41.5in.	610 lb.	490 lb.
HHB-1502-0E1A	1500	1.8	2.0 HP, 115V, 1Ø, 19.9A	NEMA 5-20P	10.0 gallons	1.23 gph	172,200	57x30x41.5in.	610 lb.	490 lb.
HHB-2503-0E2A	2500	2.8	6.0 HP, 230V, 1Ø, 28.0A	NEMA 6-30P	10.0 gallons	1.84 gph	257,600	57x30x41.5in.	650 lb.	540 lb.
HHB-303-0E1A*	300	2.5	1.5 HP, 115V, 1Ø, 12.5A	NEMA 5-15P	10.0 gallons	2.76 gph	386,400	57x30x41.5in.	480 lb.	460 lb.

\*Steam unit



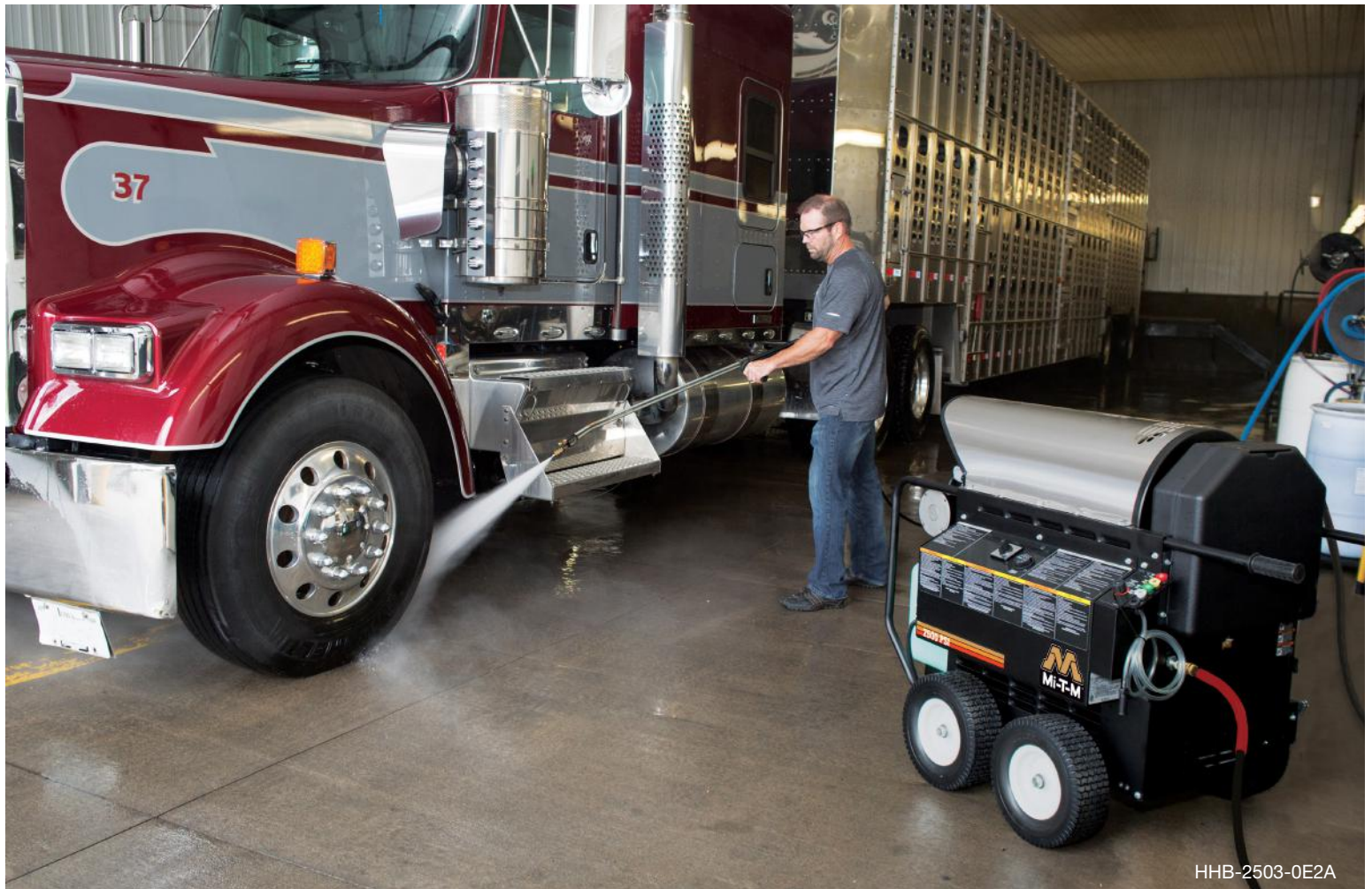
NEMA 5-15P,  
15-amp plug



NEMA 5-20P,  
20-amp plug



NEMA 6-30P,  
30-amp plug



HHB-2503-0E2A

**⚠ WARNING:** Cancer and Reproductive Harm - [www.P65Warnings.ca.gov](http://www.P65Warnings.ca.gov).